

Week 2, Term 1 - 7th February 2025  
**SOUTHWELL NEWSLETTER**



## **From the Acting Headmaster**

Dear Parents, Caregivers and members of the community

Welcome back to what promises to be another fantastic year at Southwell! Thank you for your support of our students and staff over these first few days of school. I hope you all enjoyed a restful and rejuvenating break. As we embark on this new term, I'm filled with excitement for the wealth of opportunities that await our students. It's been wonderful to see so many children already engaged, happy, and enthusiastic about learning across the many diverse areas of Southwell life.

Southwell is a place where children thrive, and we are committed to nurturing their talents and passions in every area. Whether your child is a keen artist, a keen sportsperson, a passionate performer, or an academic enthusiast, we have something to offer. From the sports field to the stage, the art and pottery rooms to the homeroom classes, we encourage all our students to explore new interests, develop their skills, and discover their full potential. We look forward to a year filled with growth, achievement, and memorable experiences. Here's to a successful and rewarding term for everyone.

Our camp season is about to start and I trust that weather conditions will allow quality experiences to occur. Years 1 and 2 will experience off site day experiences through the year - approx. one day per term. At this early stage of the year, with these ages, developing daily routine and structure is a key focus. Camp weeks for the remaining year levels are as follows:

### **Week 4**

Year 4 - Three days and two nights at Findlay Park at Karapiro.

### **Week 5**

Year 3 - Five days and one night at Waihi Beach

Year 6 - Five days and four nights on the eastern edge of Lake Taupo.

Year 7 - Five days and four nights in the Bay of Plenty.

Year 8 - Six days and five nights at Hillary Outdoors Education Centre Tongariro.

### **Week 7**

Year 5 - Five days and three nights at the CYC Ngaruawahai.

Damian Mills, Acting Headmaster

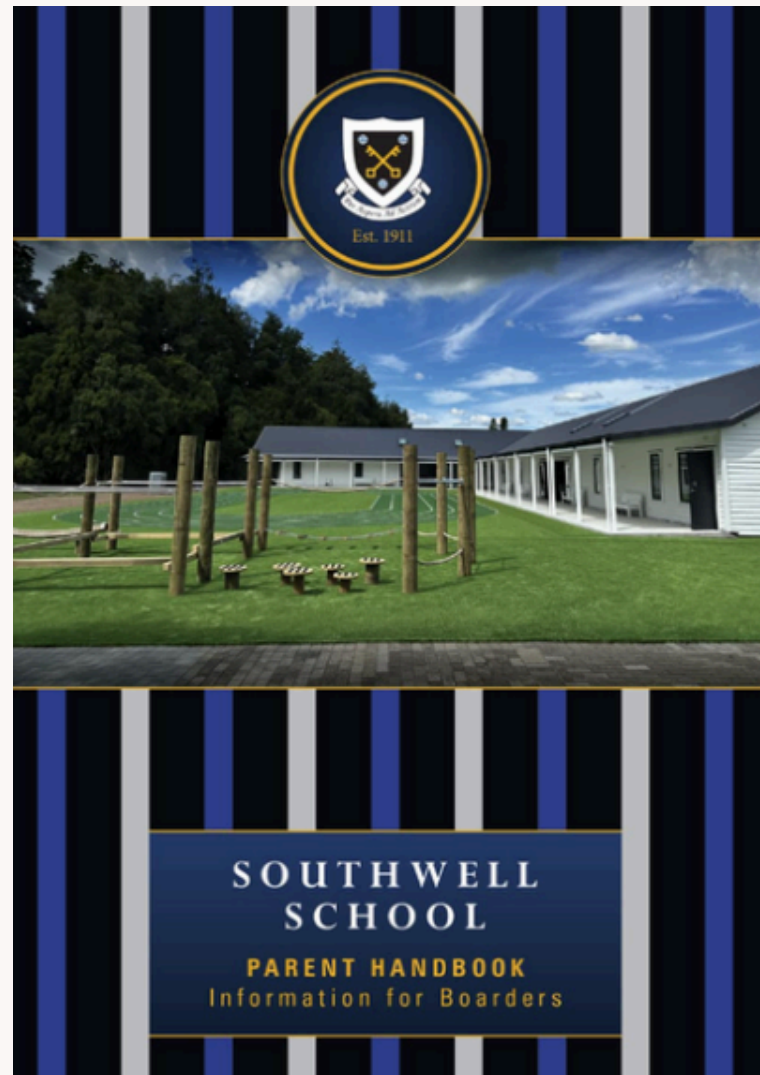
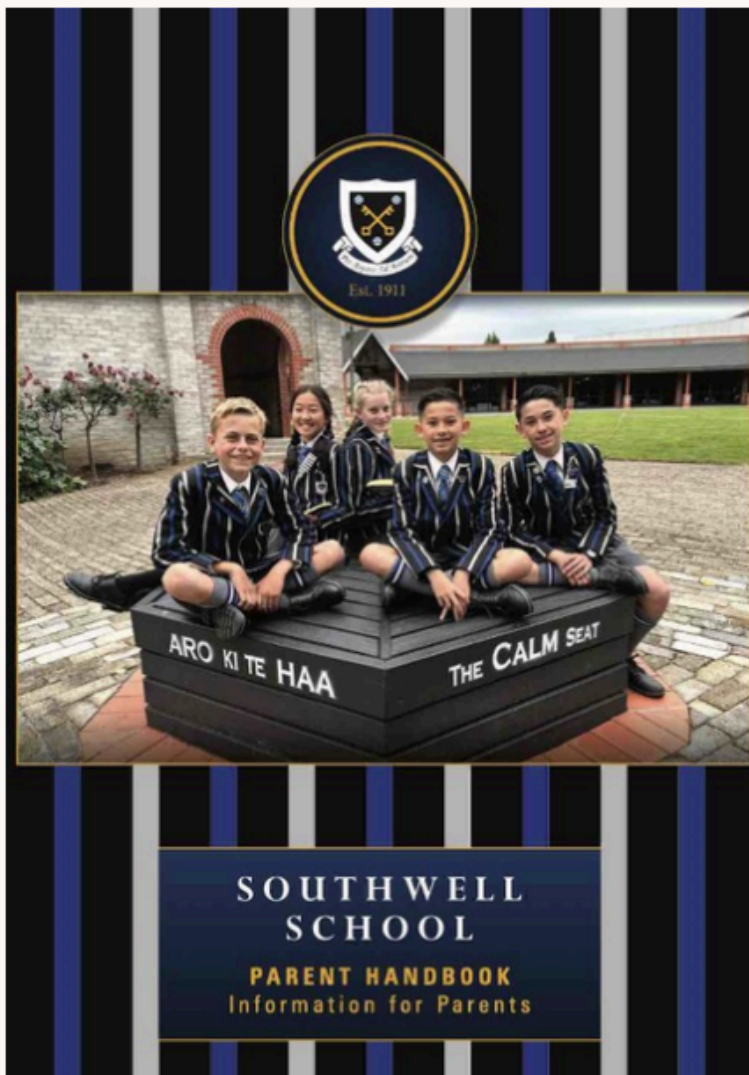
# SOUTHWELL PARENT & BOARDING PARENT HANDBOOKS

The Southwell Parent and Boarding Handbooks are “live” documents on the website and are updated as required.

These are useful resources for the our community regarding life at Southwell School.

## PARENT HANDBOOK

## BOARDING PARENT HANDBOOK



[CLICK HERE TO VIEW](#)

[CLICK HERE TO VIEW](#)

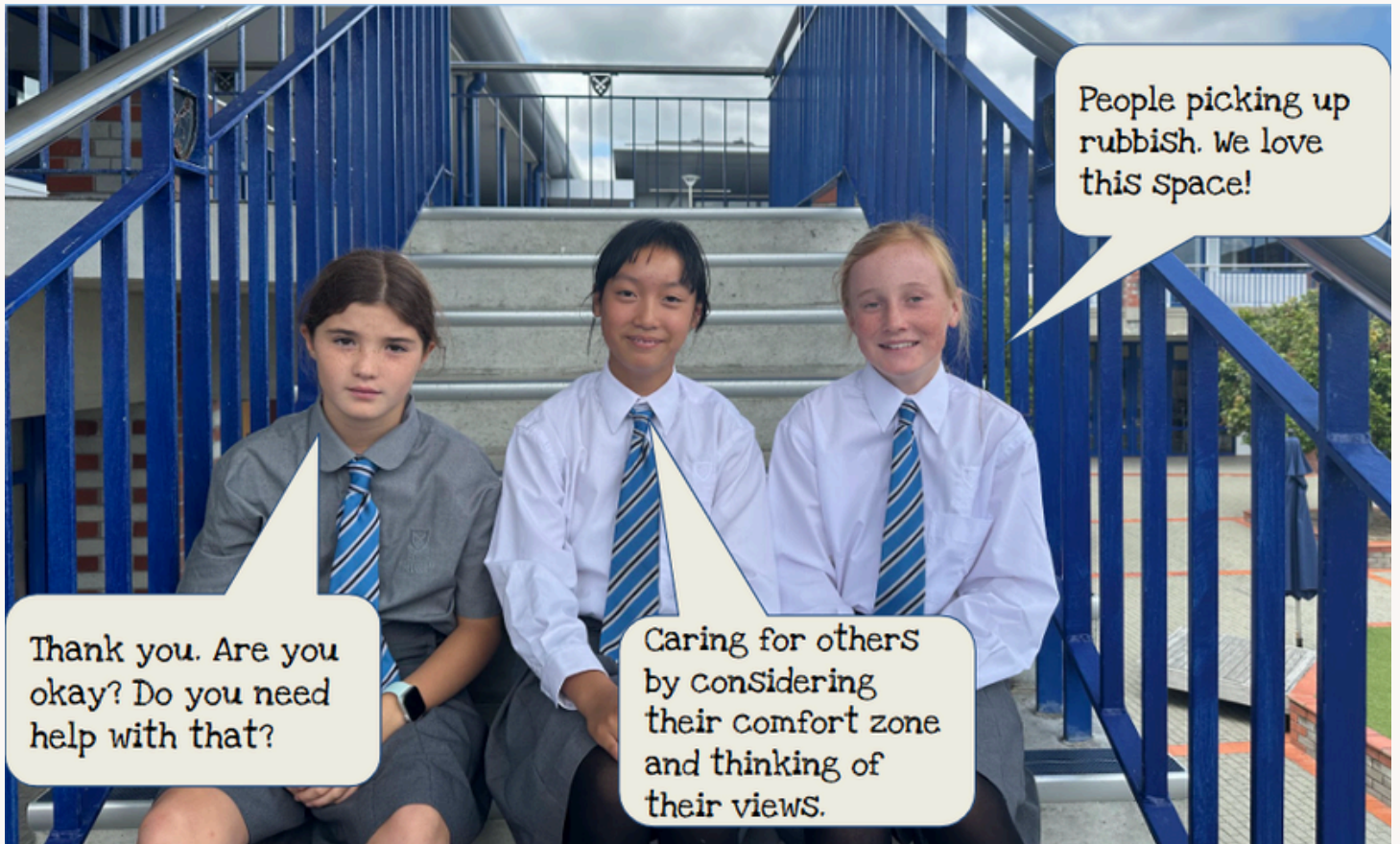


**25 Years of Girls at Southwell**  
Southwell Preparatory School for Boys became co-ed in 2000. Enrolments were strong and 116 day girls and 8 girl boarders joined the school in that year. The Roll in Term 1, 2000 was 483. Twenty-five years later Southwell is commencing this year with 640 students.

# SOUTHWELL NEWS

THE BELOW IMAGES WERE DISPLAYED ON THE LARGE SCREEN AT ASSEMBLY

## STUDENTS TELL US WHAT RESPECT LOOKS OR SOUNDS LIKE



# SOUTHWELL NEWS - ASSEMBLY

THE BELOW IMAGES WERE DISPLAYED ON THE LARGE SCREEN AT ASSEMBLY

## WHO SHOWS RESPECT?



## HOW DO WE SHOW RESPECT AT LUNCHTIME?

- We sit down to eat
- We wear our hats
- We wait for the duty teacher with our hands up
- We take care of our litter using the bins



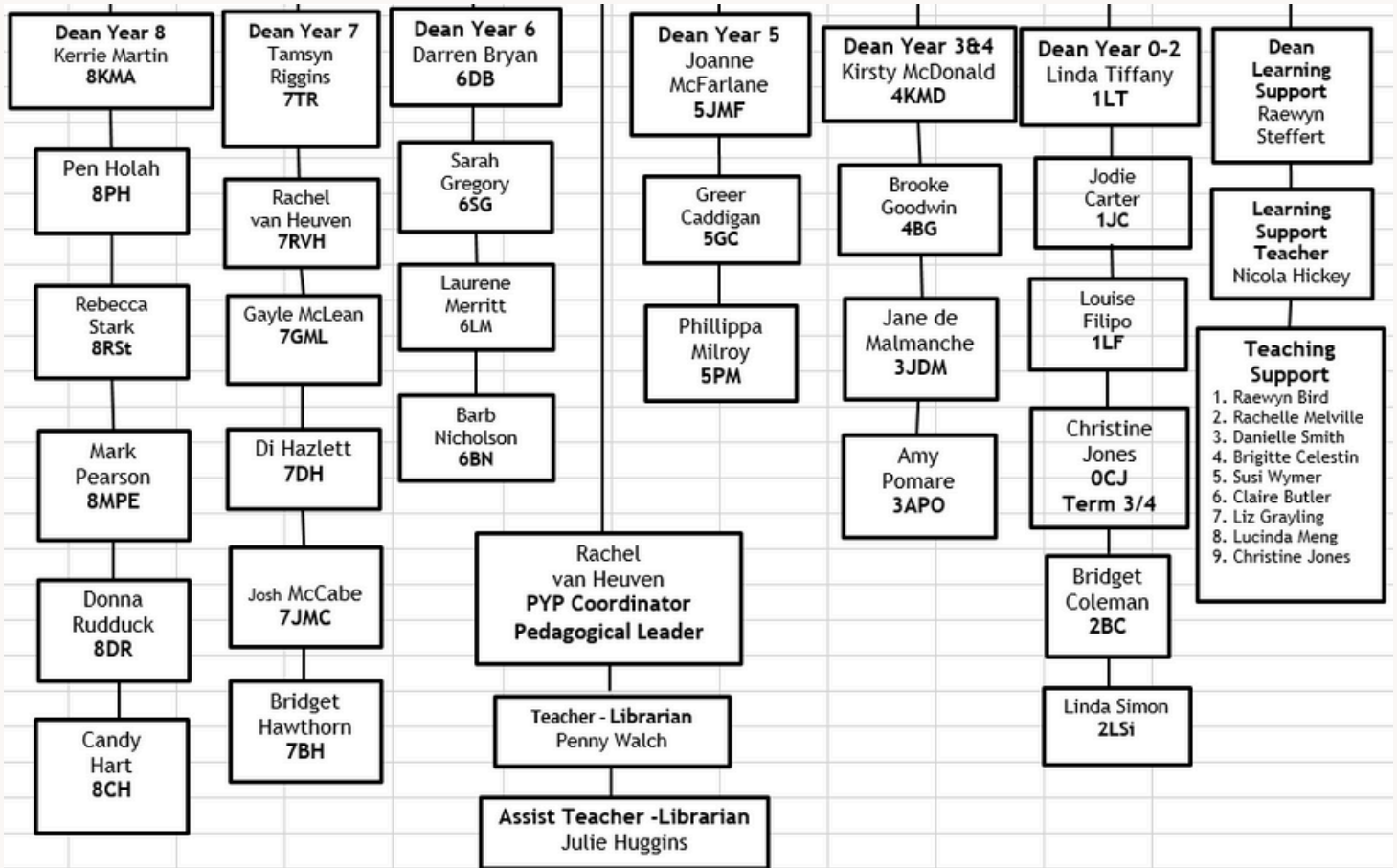
*Reminder* →

Please remember to ensure all uniforms are clearly named. Both first name and last name if possible. This makes it much easier to identify and return to owners. Thank you.

# SOUTHWELL NEWS

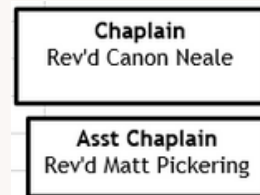
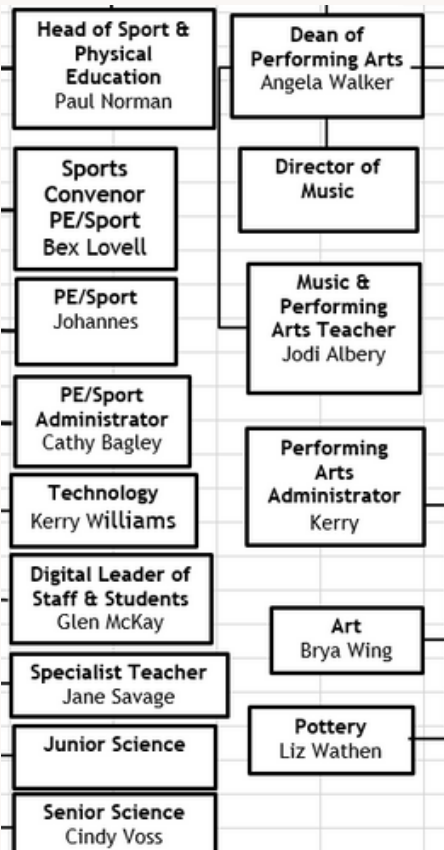
## 2025 SOUTHWELL SCHOOL TEACHING MATRIX

### Home Room & Librarian Teachers



### Specialty Teachers

### Christian Education



**BE THE  
BEST YOU  
CAN BE**

# SOUTHWELL NEWS - AWARDS, BADGES, CERTIFICATES & ANNOUNCEMENTS

The first connection of the Southwell year is when our staff come together, reconnecting, and setting intentions. Acting Headmaster, Damian Mills, spoke to staff about setting the Southwell direction and tempo for the year. Staff were involved in team building exercises, which focused on working together.

We welcomed new staff and celebrated those staff who have given 10 years service.



New staff: Laurene Merritt Y6, Bex Lovell PE/ Sports, Rebecca Stark Y8, Cherise van Zyl House Tutor, Cameron Davids House Tutor



10 Years Service Awards: Brigitte Celestin, Candy Hart, Paul Norman, Harvey Jia

## ***Welcome to our new Southwell Borders for 2025***



William Glenn, Chevy Rayner, Tommy Rowe, Emily Stevenson, Mia Terry, Nicholas Williams, Dacey Woodyard



Please remember to respect our Southwell neighbours when dropping and picking up your children. No parking over driveways, in driveways and on grass berms and road frontages of neighbouring properties. Thank you for your co operation.



## Your Library - Your Books

Welcome to this series of short videos which will help you (and your child) familiarise yourself with your library. The library system (Oliver-Orbit) has lots to offer. [THIS](#) video explains how to search for a book in our library.

## Parent Help

We can not run the Library without the help of volunteer parents (and, in some cases, Grandparents and former parents!) If you would like to give us a helping hand, here is an outline of some of the things you could do:

- *Shelf tidying*: at a time of your choice (usually at drop off or pick up time) and can be as little as 5 minutes. It is not glamorous, but there is a sense of satisfaction in knowing that the books are in the right place... until the next class comes in!!
- *New book covering*: you need to be a bit particular and you will need to give anywhere from about half an hour at a time. You can do this at any time that suits. In the past a small group of parents have found a mutually agreeable time so they can chat and work. This is a very satisfying job (we do currently have this area well covered (pardon the pun) but like to train people, so they are ready and waiting as and when required!).
- *Book fixing*: you will need to give anywhere from half an hour at a time. You can do this at any time that suits. This job is a bit mucky, but it helps keep books in circulation. There is a former parent who comes in on a Friday morning and she can help guide you. Email Penny Walch (Librarian) at [penny.walch@southwell.school.nz](mailto:penny.walch@southwell.school.nz) if you are keen!

## Senior Fiction

Our Year 7 & 8 students have access to our Senior Fiction section of the library.

This section holds novels, graphic novels and manga which have increasingly mature content (age appropriate.)

These books might include one, or more, of:

1. Some violent content.
2. Some relationship content.
3. Some swearing (non gratuitous and in context.)
4. Complex themes.

While we can't read every title, we use trusted review sites and booksellers to help us select these titles. But, sometimes we miss things.

If you feel a title is inappropriate for our library, please let us know as we have a process in place for this eventuality. If your child ever feels uncomfortable reading ANY title, they should stop reading straight away (we do teach this.)

This doesn't necessarily mean that the title is inappropriate for our library, it just means your child is learning who they are as a reader.

If you do not want your child borrowing from Senior Fiction, please do let us know and we can direct them to all the other quality literature in the library. Please be sure that your child understands this situation.

# SICK PUPIL GUIDELINES

## PLEASE KEEP THIS NOTICE FOR FUTURE REFERENCE

In order for pupils to gain maximum learning they need to be well. Often a pupil who seemed well at home can find it difficult to cope with the focus required whilst at school.

Parents need to have:

- An alternative person available should their child be unwell and a parent is unable to care for them.
- Your alternative person's contact details should be up to date and given to the administration staff.

In consideration of other pupils and staff at Southwell School, the following criteria has been developed:

ILLNESS	RECOMMENDED RECOVERY TIME
Vomiting	Until 24 hours after LAST vomit
Diarrhoea	Until 24 hours after last runny bowel motion
Conjunctivitis	Until eye discharge has ceased
Measles	For at least 4 days after onset of rash
Whooping Cough	For 5 days after antibiotic treatment commenced
Mumps	For 9 days or until swelling has gone
Chicken Pox	For 7 days from the onset of the rash or when the scabs are dry
School Sores	Until 24 hours after antibiotics started
Streptococcal Throat	Until 24 hours from commencement of treatment
<u>Covid 19</u>	Please check the current requirements on the Ministry of Health website

These guidelines have been developed to ensure the pupil is completely well before returning to school, and therefore less likely to become unwell again. The guidelines are also in place to protect other pupils and the staff at Southwell School.

**Medication Policy:** If your child requires medication to be administered during the school day, please can you bring it to school in the container it has been dispensed in by the pharmacy—it is helpful if the pharmacy can dispense into two lots (one for school and one for home) and drop it into the clinic. On the first day the medication is to be given at school you will need to complete a 'Medication Request' form —available from the office of the clinic.

**Nut Allergy:** We have several pupils who are ANAPHYLACTIC if they have nuts. Some of these pupils are anaphylactic even if they are exposed to nuts (peanuts in particular). We would ask that you avoid sending food to school which contains nuts e.g. mixed nuts, muesli bars, peanut butter sandwiches, nutella sandwiches etc. They do not have a minor reaction, but a serious reaction they can die from. These pupils have EpiPens (prepackaged adrenaline) at school with them, because of the serious nature of their allergy.

**Summer Hats:** Please can these be bought to school every day for Term 1 and Term 4.

# SNAPSHOTS

