



From the Headmaster

The energy and laughter of our students has returned! Southwell is humming with activity, and a focus on the year ahead with learning programmes now in full swing. It has been a particular highlight to welcome so many of you to our year group Parent Morning Teas this past week. These gatherings are a vital part of our start of year routine, providing an opportunity to meet key staff, connect with fellow parents, and share an overview of the learning planned for this term. Thank you for the warmth and engagement you have brought to these sessions; that sense of partnership is what makes the Southwell community so special.

While homerooms and specialist classes have focused on settling into routines, we have also wasted no time in opening doors to new opportunities, including:
Auditions for our Choir, Rock Band, and Instrumental groups. The talent and courage shown by students stepping forward to share their gifts has been inspiring. Summer Sports Musters have begun, ready to make the most of the sun and the spirit of competition.

Amidst the high energy of the new term, we have also established our daily "Just Read" initiative. Each day after lunch, the entire school - students and staff alike - pauses together to simply pick up a book and read. This shared moment of quiet reinforces the value we place on literacy, building reading stamina and cultivating an important lifelong habit.

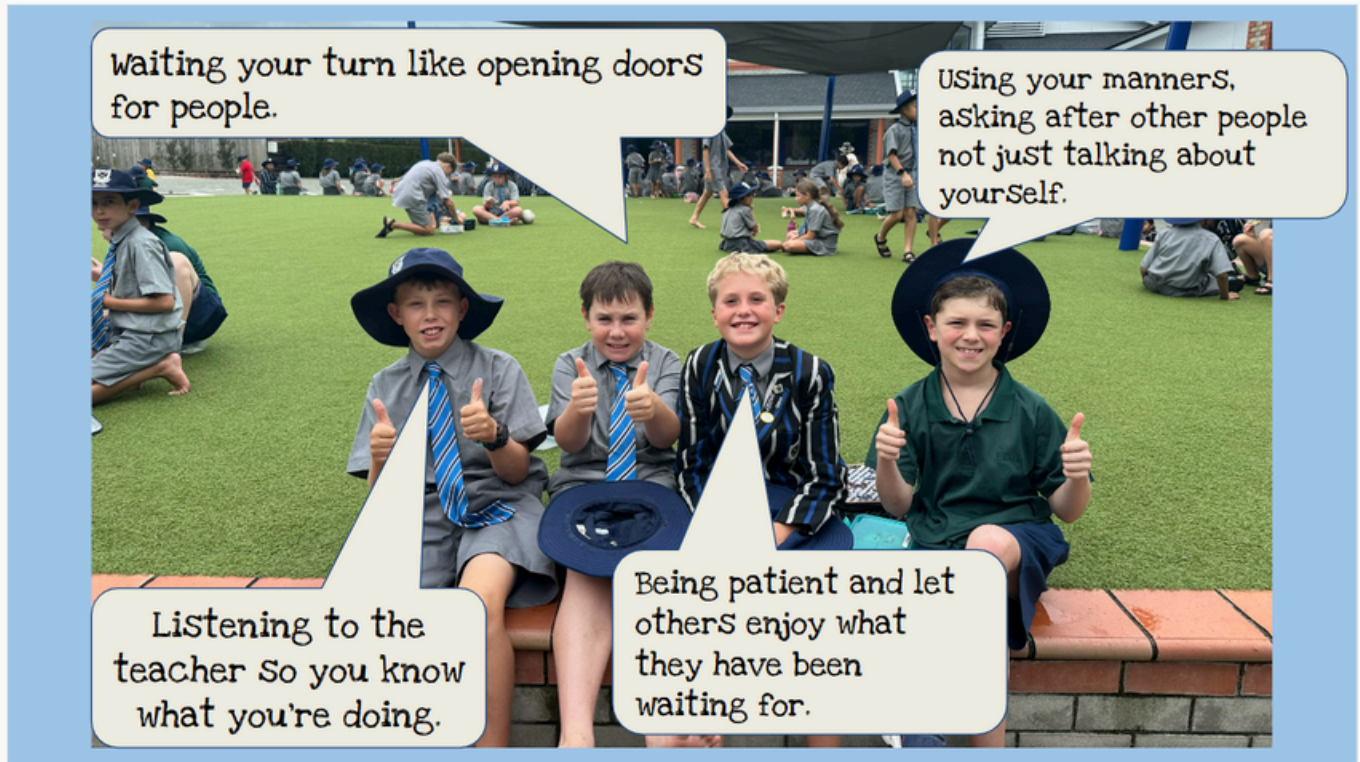
With Camp Week just around the corner, the excitement continues to build. Weeks 1 and 2 have set a fantastic tone for the year - respect, energy, and a shared commitment to excellence.

Thank you for your ongoing support as we navigate this busy, brilliant start to the academic year.

Keryn Bindon, Headmaster

SOUTHWELL ASSEMBLY

THE BELOW IMAGES WERE DISPLAYED ON THE LARGE SCREEN AT ASSEMBLY
STUDENTS TELL US ABOUT BEING RESPECTFUL



WHO IS RESPECTFUL?



SOUTHWELL NEWS

The Southwell year began with our staff coming together to reconnect and set a collective intention for the months ahead. Headmaster Keryn Bindon shared her vision for the school's direction and tempo, leading into team-building exercises designed to strengthen our professional bonds. It was also a wonderful opportunity to welcome new faces and honor the incredible dedication of staff members celebrating 10 and 20 years of service to our school community.

Welcome to our new & returning staff



New Staff: *Teachers* - Amelia Meertens, Jess Field, Paige Walker, Joel Fleming, Rachel Peterson. Sarah-Jane Flexman(*Performing Arts Administrator*), Nicola Sale (*Teacher Aide*), Juane Camacho, Jean de Villiers (*Boarding Tutors*)



Returning:
Tamsin Bradding
(*Teacher*)

Welcome to our new students



TERM 1 LEARNING OVERVIEWS HAVE NOW BEEN
LOADED TO THE SCHOOL WEBSITE.
PLEASE CLICK [HERE](#) TO VIEW.

SOUTHWELL NEWS

MEET THE NEWEST MEMBERS OF OUR 2026 TEAM

"I'm Joel Fleming, Year 7 Teacher, and when I'm not teaching, you can usually find me fishing."



"I'm the Nicola(Nicky) Sale, Learning Support Assistant, and when I'm not supporting teachers in the classroom, you can usually find me Drawing, painting and doing unolingo puzzles."



"I'm Paige Walker, a Year 6 Homeroom teacher, and when I'm not in the classroom, you can usually find me at the gym or walking around the lake."



"I'm Sarah-Jane Flexman, Performing Arts Administrator, and when I'm not administrating, you can usually find me in the kitchen trying out new recipes."



"I'm Jess Field, Year 3 Homeroom Teacher, and when I'm not teaching, you can usually find me spending time with friends and family or reading with a cup of coffee in hand."



MEET THE NEWEST MEMBERS OF OUR 2026 TEAM

I'm Amelia Meertens. This year I am teaching Year 2 and when I'm not teaching I enjoy playing my viola in orchestra's.



I'm Tamsin, a Healthy Choices teacher, when I'm not cooking you can usually find me creating and crafting



Returning

Hi my name is Rachel Peterson and I teach year 7. When I'm not teaching, you will find me walking or running along our beautiful awa!



I'm Juané Camacho, Boarding House Tutor, and when I'm not in the boarding house, you can usually find me with my head in a book.



Jean de Villiers, Boarding Tutor, and when I'm not in the boarding house, you can usually find me on a run or playing hockey.



HOME ROOM LEARNING CONFERENCES TAKE PLACE NEXT WEEK (WEEK 3). MON-THURS(3.30PM-7PM)DAY STUDENTS + FRI (3.30PM-5PM) BOARDING STUDENTS.

If you have not registered, please contact your child's home room teacher directly.



Explore Our Library

Check out our new series of short videos designed to help you and your child navigate our library system, Oliver-Orbit. [Watch](#) this video to learn how to search our collection!

Parent Volunteers Needed

We love our volunteers! Whether you have 5 minutes or an hour, we appreciate the help.

Shelf Tidying: Quick and easy (approx. 5 mins) at drop-off or pick-up.

Book Covering: Requires a steady hand and about 30 minutes. Great for a social catch-up with other parents!

Book Repair: Help us keep well-loved books in circulation. Training is available on Friday mornings.

Interested? Email our Librarian, Penny Walch - penny.walch@southwell.school.nz.

Senior Fiction (Year 7 & 8)

Our Senior Fiction section contains novels, graphic novels, and manga with age-appropriate, mature themes. These titles may include complex themes, mild swearing, or stylized violence.

Our Process: We use trusted reviews to curate this collection. If you have concerns about a specific title, please reach out to discuss our review process.

Reader Guidance: We encourage students to stop reading any book that makes them feel uncomfortable.

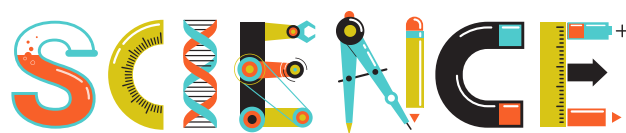
Preferences: If you prefer your child not to borrow from this section, please let us know so we can guide them toward other great titles. Please ensure that your child understands this situation.

Just Read

Just Read: A Southwell Priority - Research shows that reading for pleasure is vital.

That's why we've timetabled 10 minutes every day for students and staff to simply read. Help us make reading a non-negotiable habit at home, too! If you need tips or recommendations, our librarians are here to help.





SCIENCE BADGES: Students in Years 7 and 8 have the option to complete a Science Awards Trust Badge task.

These tasks are over and above their School work. There are over 30 badges to choose from.

There is a cost of \$6 associated with each badge. This is paid in advance, and charged to your account. Once the tasks are completed, the project is submitted for marking and badges are presented at an assembly near the end of each term.

More information can be found at <https://sciencebadges.co.nz>

Ms Voss coordinates ordering and marking of these badges for both Year 7 and Year 8.

Any returning Year 8 student who has completed a badge over the summer break may now deliver their work to Ms Voss in Rm 23. Anyone interested in starting a new badge may now place their order. It is best if parents email

cindy.voss@southwell.school.nz, to confirm that students have permission. Charges will appear on your account. No refund is given for non-completion of a badge.

SCIENCE FAIR: Year 7 and 8 students are encouraged to attempt a Science Fair project in 2026. There are many categories that can be entered, developing multiple skills in the scientific field. Whilst Science Fair does not run until Term 3, it is important to think about topics early and start collecting data as soon as possible. Especially if you are undertaking a "Science Fair Board".

Projects are collected early in Term 3, for internal assessment. Only those deemed of a suitable standard are then put forward to the NIWA Waikato Science Fair. This will be on Monday 24th August 2026. The themes for the specialist areas are shown below.

Traditional science fair boards still fall in the areas of Living World, Material World, Physical World and Planet Earth and Below, the categories below cover, photography, wallcharts, drawing and videos. Students are encouraged to talk to their science teachers for more information.



CAMP

THE EXCITEMENT IS BUILDING AS WE BEGIN THE COUNT DOWN TO CAMP WEEK - AS PARENTS AND CAREGIVERS, YOU WILL BE RECEIVING REGULAR UPDATES, WATCH OUT FOR THESE IN YOUR INBOX. CLICK [HERE](#) TO VIEW CAMP TIMESTABLE'S AND CAMP GEAR LIST'S.



SCHOOL CAPS

From around 1928 up until the mid-1980's it was compulsory for all boys to wear a cap to and from school. "We always wore our caps to and from school. The big 'S' on the front was very identifiable."

Caps were abolished partly because of the poor quality, and partly because local lads were creating problems for boys who cycled to and from school.

Parenting event sponsored by Sentinel Homes

Empowering parents, strengthening communities

Tackling Technology

Navigating the *digital* world with our kids

Technology can be great for interaction and creativity, but kids can easily slip into hours of passive (and mindless!) consumption.

How do we tell the difference and help our kids navigate an increasingly enticing digital world?

Covering cyberbullying, social media, gaming and parental controls, this talk is your essential guide to keeping kids safer online.



Pio Terei
Pōu Tangata & Kōkōreia (Event MC)



Holly Brooker
Online Safety Advocate & Parenting Educator



Sheridan Eketone
Parent Coach & Presenter

Tue 24 March
6pm-7:30pm
Light refreshments from 5.30pm

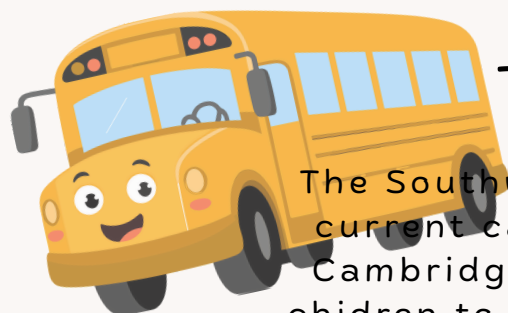
Southwell School Auditorium
200 Peachgrove Rd, Hamilton

 **SOUTHWELL SCHOOL**
EST. 1961

This Southwell exclusive opportunity is not to be missed.

Numbers are limited and we ask that you register your attendance [HERE](#)



TAMAHERE BUS SERVICE

The Southwell Tamahere Bus Service will continue in its current capacity for 2026, if you live in the Tamahere/ Cambridge and surrounding areas and would like your children to use this service, please click [HERE](#) for further information.



SCHOOL FEES:

If you are not on a payment plan for your school fees, this is a reminder that Term 1 School Fees are due 14 days after the first day of Term.

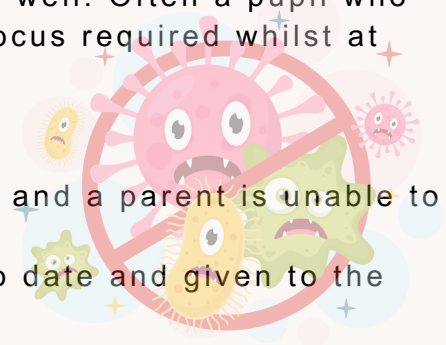
SICK PUPIL GUIDELINES

PLEASE KEEP THIS NOTICE FOR FUTURE REFERENCE

In order for pupils to gain maximum learning they need to be well. Often a pupil who seemed well at home can find it difficult to cope with the focus required whilst at school.

Parents need to have:

- An alternative person available should their child be unwell and a parent is unable to care for them.
- Your alternative person's contact details should be up to date and given to the administration staff.



In consideration of other pupils and staff at Southwell School, the following criteria has been developed:

ILLNESS	RECOMMENDED RECOVERY TIME
Vomiting	Until 24 hours after LAST vomit
Diarrhoea	Until 24 hours after last runny bowel motion
Conjunctivitis	Until eye discharge has ceased
Measles	For at least 4 days after onset of rash
Whooping Cough	For 5 days after antibiotic treatment commenced
Mumps	For 9 days or until swelling has gone
Chicken Pox	For 7 days from the onset of the rash or when the scabs are dry
School Sores	Until 24 hours after antibiotics started
Streptococcal Throat	Until 24 hours from commencement of treatment
Covid 19	Please check the current requirements on the Ministry of Health website

These guidelines have been developed to ensure the pupil is completely well before returning to school, and therefore less likely to become unwell again. The guidelines are also in place to protect other pupils and the staff at Southwell School.

Medication Policy: If your child requires medication to be administered during the school day, please can you bring it to school in the container it has been dispensed in by the pharmacy—it is helpful if the pharmacy can dispense into two lots (one for school and one for home) and drop it into the clinic. On the first day the medication is to be given at school you will need to complete a 'Medication Request' form —available from the office of the clinic.

Nut Allergy: We have several pupils who are ANAPHYLACTIC if they have nuts. Some of these pupils are anaphylactic even if they are exposed to nuts (peanuts in particular).

We would ask that you avoid sending food to school which contains nuts e.g. mixed nuts, muesli bars, peanut butter sandwiches, nutella sandwiches etc. They do not have a minor reaction, but a serious reaction they can die from. These pupils have EpiPens (prepackaged adrenaline) at school with them, because of the serious nature of their allergy.



Summer Hats: Please can these be bought to school every day for Term 1 and Term 4.

SOUTHWELL NEWS

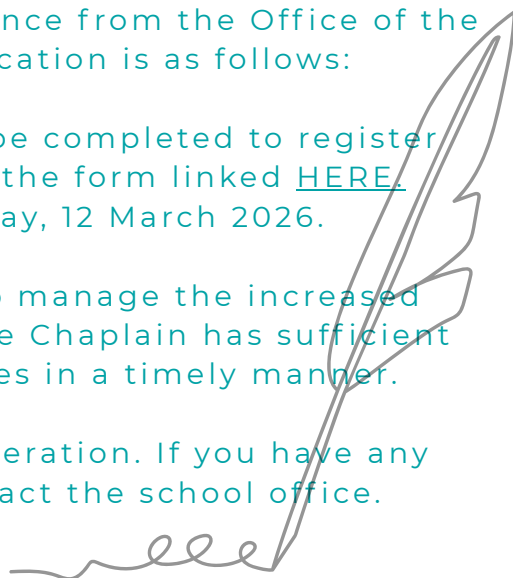
2026 CHARACTER REFERENCES FROM THE SOUTHWELL CHAPLAIN

Please note, the process for obtaining a reference from the Office of the Chaplain for a child's 2027 school application is as follows:

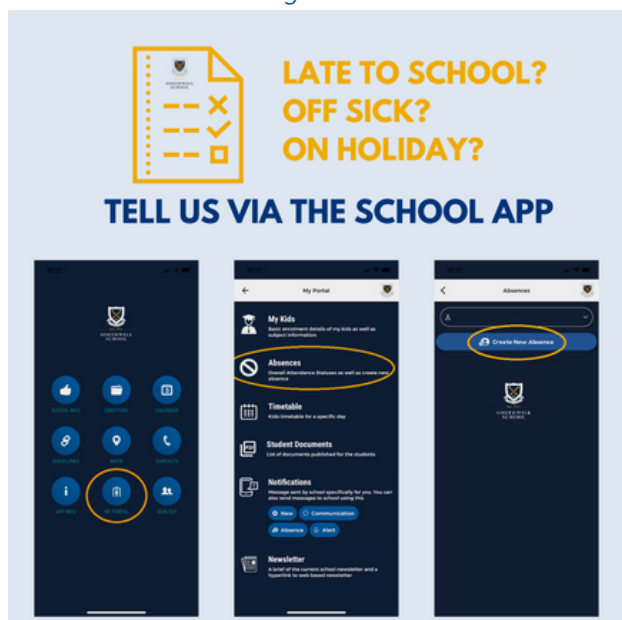
1. Registration Form: A specific form must be completed to register your need for a reference. You can find the form linked [HERE](#).
2. References will be called for by Friday, 12 March 2026.

This process has been implemented to help manage the increased demand for references and to ensure that the Chaplain has sufficient time to provide these references to families in a timely manner.

Thank you for your understanding and cooperation. If you have any questions, please do not hesitate to contact the school office.

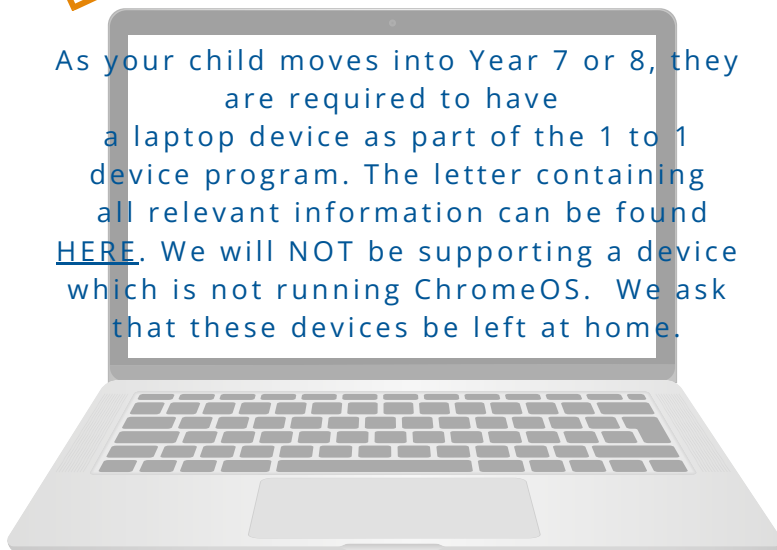


Did you know you can use the school app to log your child's absence? It is a quick and easy process that helps us stay informed of your child's attendance. Thank you.



DEVICES 2026 YEAR 7& 8'S

As your child moves into Year 7 or 8, they are required to have a laptop device as part of the 1 to 1 device program. The letter containing all relevant information can be found [HERE](#). We will NOT be supporting a device which is not running ChromeOS. We ask that these devices be left at home.

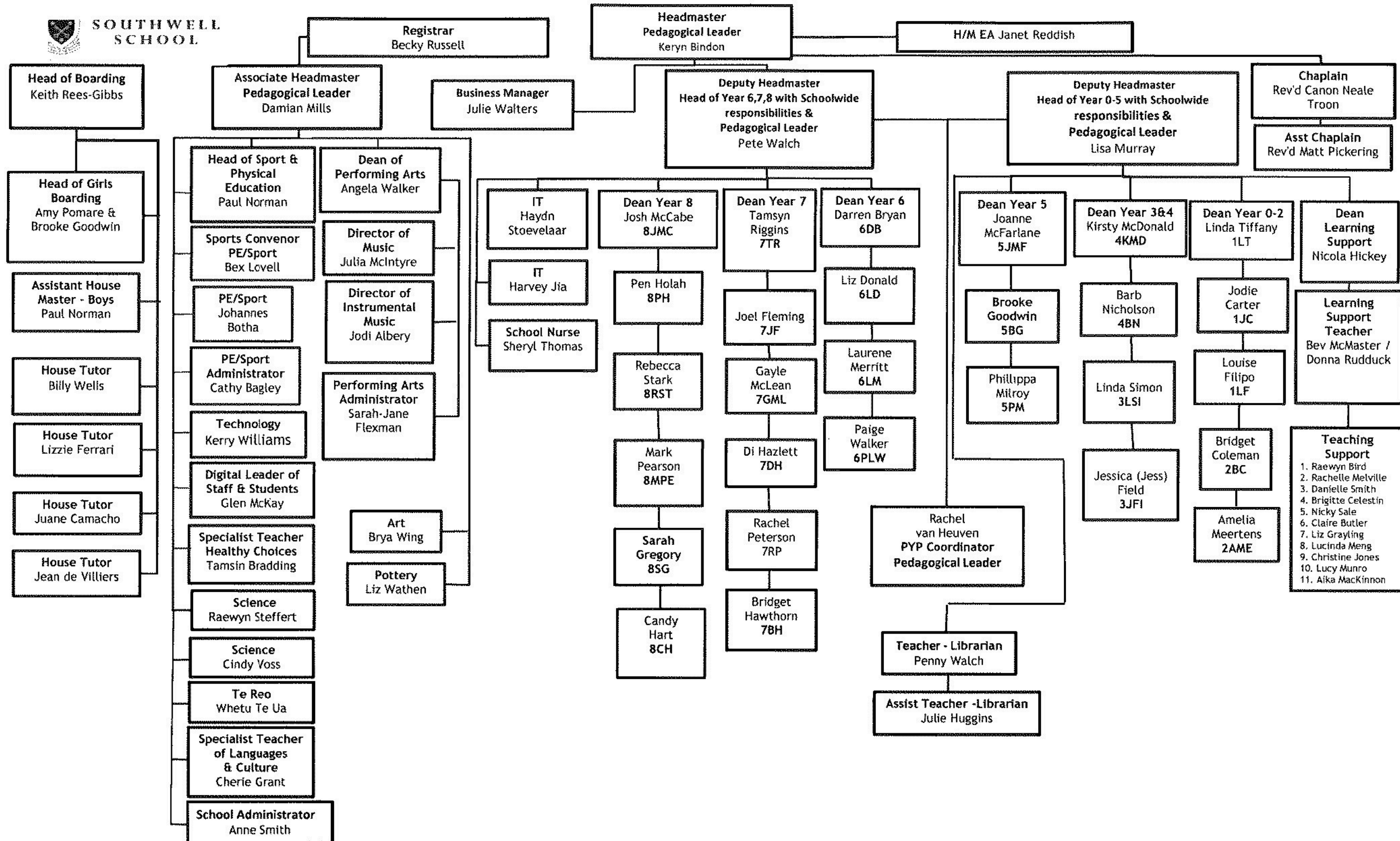


Reminder!

Please remember to ensure all uniforms are clearly named. If possible, both first and last name. This makes it much easier to identify and return to owners. Thank you.

Southwell School Organisation Chart

Term 1, 2026





CLUBCARD FOR SCHOOLS

SUPPORTING OUR COMMUNITY



How It Works

By simply scanning your **Clubcard** every time you shop at Rototuna New World, you can help contribute to our school. It's a simple, yet powerful, way to make a difference. The more families that sign up and scan their cards, the more opportunities we can provide for our learners.

How to Get Involved

Getting started is easy:

All you need to do is share your **Clubcard** with 'Southwell School' via this [form](#).

Shop at New World Rototuna and scan your **Clubcard** with every purchase.

Rototuna New World will donate 1% of all sales from registered Clubcards directly to our school. Please share this form with family and friends.

If you do not have a **Clubcard**, simply register [here](#) to join. Then complete this form when you have your **Clubcard** number.

You can rest assured that your personal **Clubcard** rewards, like Airpoints, won't be affected. This is a separate programme funded directly by Rototuna New World.

Questions & Answers

Can extended family and friends participate?

Yes, we encourage anyone connected to Southwell School - grandparents, aunts, uncles, and family friends-to register their Clubcard with Southwell School via this [form](#) and help support our school.

Will this impact my personal Clubcard rewards?

Not at all. This programme is separate from your personal rewards. The funding comes directly from Rototuna New World based on the sales from all registered Clubcards. You'll continue to collect your usual Clubcard and Airpoints rewards as normal.

Ready to Help?

Register your **Clubcard** with Southwell School today and help us enhance our students' learning experience.

THANKS FOR YOUR SUPPORT!