



From the Headmaster

As we head into our third week of winter matches, the passion on the field is a clear reminder of why sport remains such a pillar of the Southwell experience.

Our students often tell us that their greatest sense of joy comes from the friendships forged in the heat of competition. Through sport, they are navigating the life skills of winning with humility and facing defeat with grace - lessons that serve them just as well in life as they do on the field or court.

At the heart of this experience is community. We aim to foster an environment where every student feels supported by peers and adults who model positive teamwork.

Camaraderie was on full display yesterday during our fixture with St Kentigern Girls' School. We look forward to keeping that momentum going as we head into a busy series of exchanges, including: St Kentigern College in Week 5, and St Kentigern Boys' School in Week 6.

A note of gratitude - as we acknowledge that these opportunities don't happen by accident. To the teachers and parents who dedicate their time, energy, and expertise to our teams - thank you. You are the ones who make the magic of sport a reality for our learners.



Keryn Bindon, Headmaster

SOUTHWELL NEWS- AWARDS, BADGES, CERTIFICATES & ANNOUNCEMENTS



PAC Monitors -
Grace Qin, Sarah Saju, Freddy Park, Ellie Stacey Bryant, Charlie Inglis



Tech Monitors -
Martin Su, Liam Bunker, Caleb Winter, Leo Peacocke, Alex Bennett, Harry Jones, Thomas Dudin



Squad Leaders -
Mia Terry, Chevy Rayner

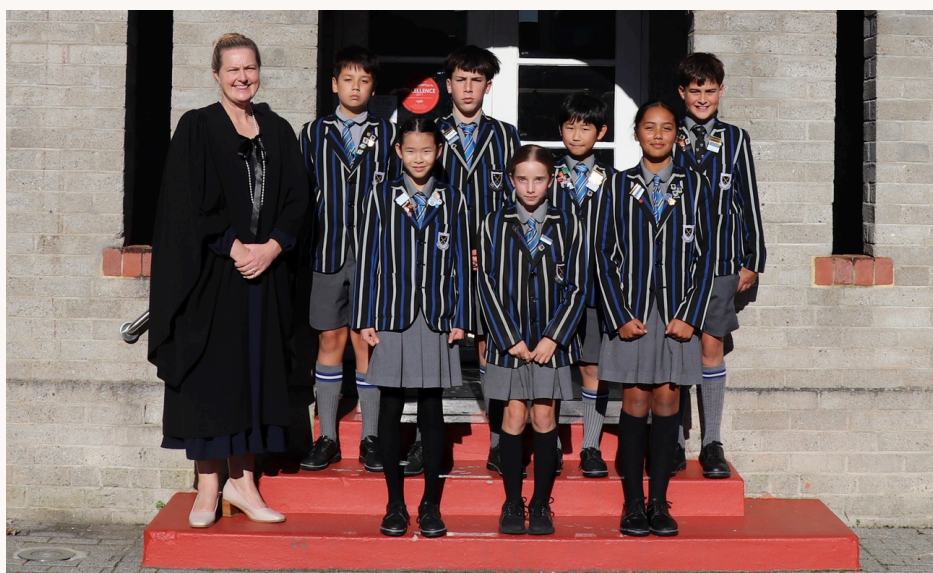


Junior Playground Monitors -
Amelia Li, Alice Tang, Ariel McIntyre



Paper Monitors-
Annabel Stent, Andy Shi, William Swindley, Florence Rope, Chloe Cui, Ashton Catley, Minh Phan, Arlo Williams, Harper Bellamy, Georgia Donald, Varun Vijay Anand, Romily Savage

Captains of Sport -
Rugby - Sam Benjamin
Football (boys) - Jacob Schneider
Football (girls) - Edith Paterson
Netball - Arahia Turia-Fox
Hockey - Theo Chen
Badminton - Bella Bai
Cross Sport - Pip Ormond
Inline Hockey - Jack Baldock



SOUTHWELL NEWS - AWARDS, BADGES, CERTIFICATES & ANNOUNCEMENTS



Road Patrol Monitors -

Hugh Welch, Ethan Barrett, Jaeden Potter, Parleen Kaur, Cooper Burman, Lucas Cheung, Lewis Moore, Nikita Lillas, Rizak Kaur, Harris O'Leary, Theo Laity, Callum Ward, Lucas Martin, Ishwarjot Dhillon, Joey Lyu, Charlotte McKenna, Kyra Vithani, Holly Purchase, Charlotte Ariaens, Harrison Pestello

Calling all Southwell alumni stories



Do you know a Southwell Old Boy or Old Girl doing something interesting, inspiring, adventurous, creative or just plain cool?



We're looking for alumni success stories, news, unique experiences and 'where are they now' updates worth sharing with our community.



You might be an alumni parent with a great story to tell, or have a young Southwell alum doing something noteworthy.



We'd love to hear about it

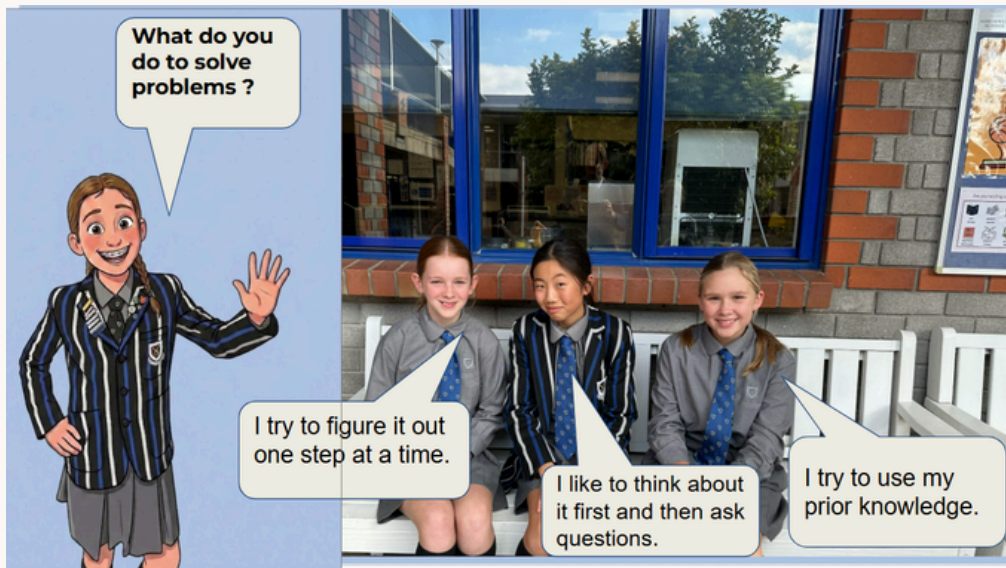
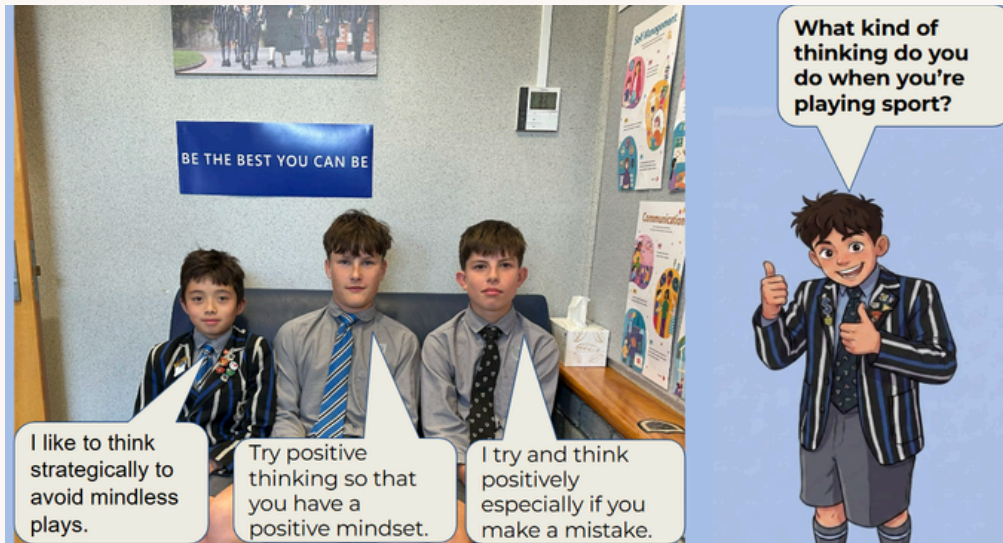


Email alumni@southwell.school.nz

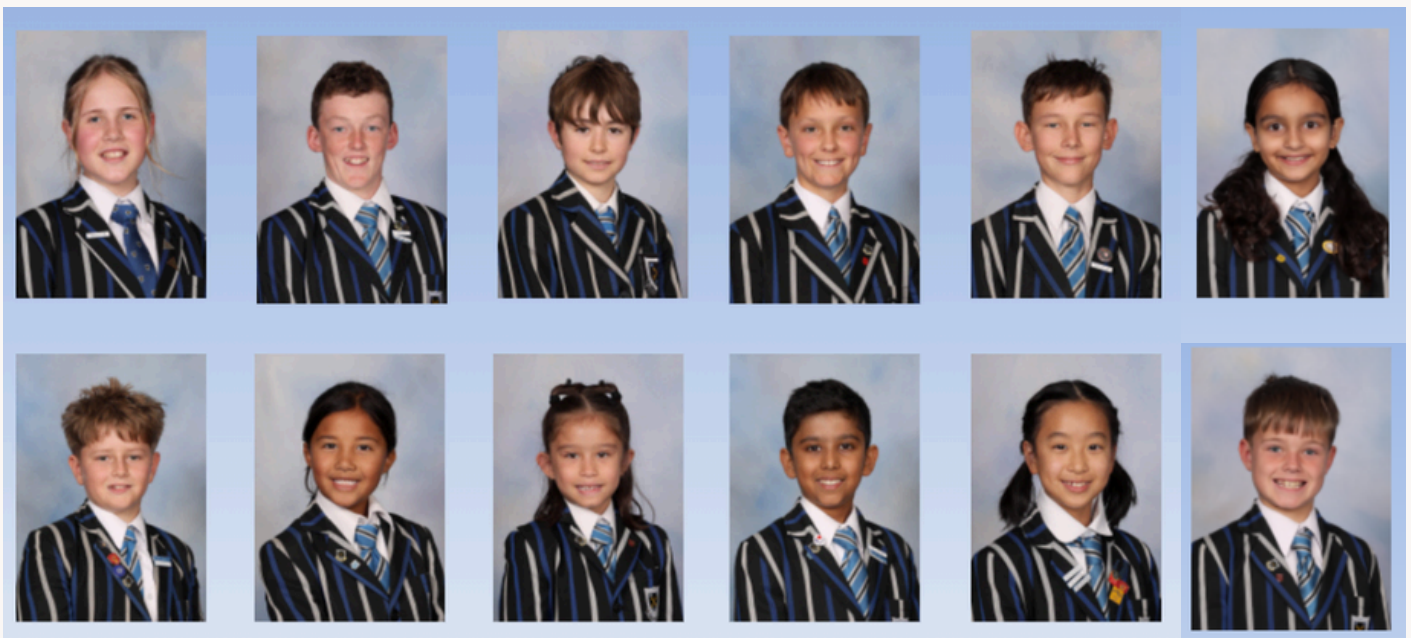
Share a story, a shout out, or a lead.

SOUTHWELL NEWS - ASSEMBLY - WEEK 3 & 4

THE BELOW IMAGES WERE DISPLAYED ON THE LARGE SCREEN AT ASSEMBLY
HOW DO WE THINK IN ORDER TO SOLVE PROBLEMS?



WHO IS A THINKER?



THE BELOW IMAGES WERE DISPLAYED ON THE LARGE SCREEN AT ASSEMBLY

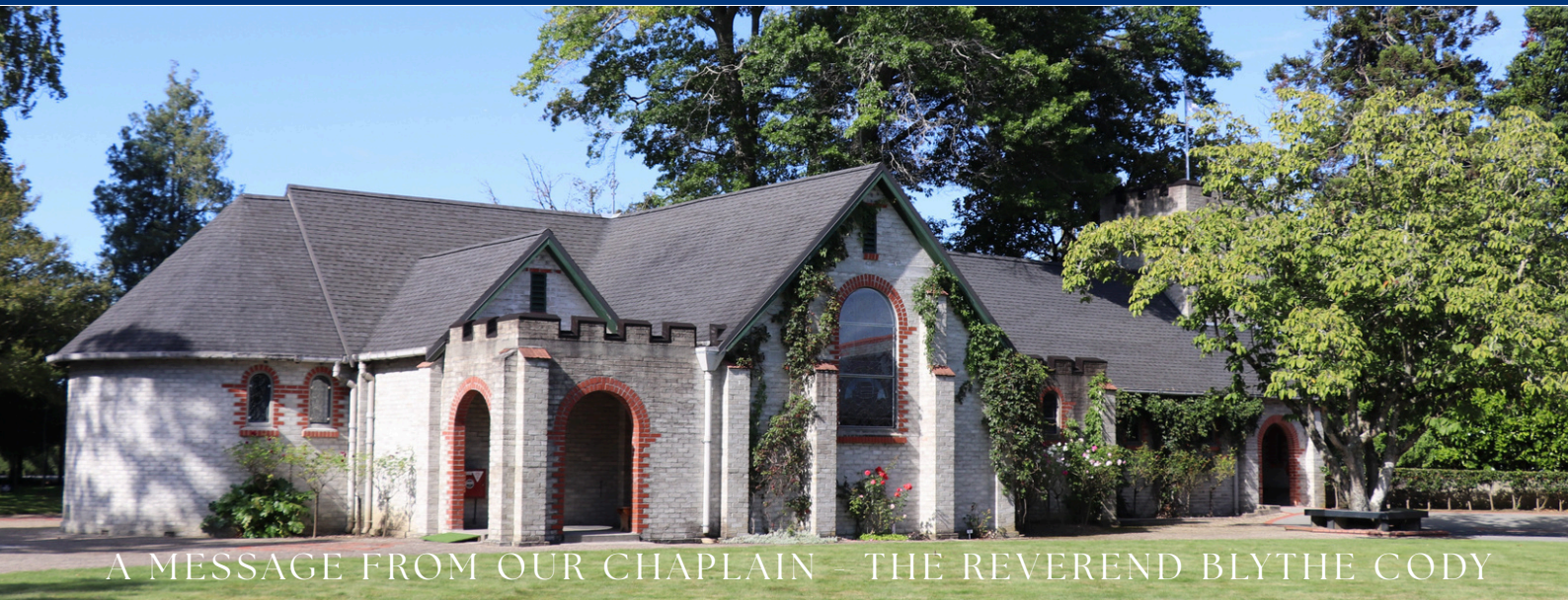
WHY IS IT IMPORTANT TO COMMUNICATE?



WHO IS A GOOD COMMUNICATOR?



All Hallows Echo



A MESSAGE FROM OUR CHAPLAIN – THE REVEREND BLYTHE CODY

In the Gospel of John, on the night before he dies, Jesus tells his followers he is going on a journey. He reassures them with a phrase that, frankly, leaves them more confused than comforted: “You know the way to the place where I am going.”

His friend, Thomas, speaks for all of us when he responds: “Lord, we don’t know where you are going, so how can we know the way?”

I’ll admit, I am terrible with directions. I rely on Google Maps to tell me where to turn, and even then, I’m just following a voice—I don’t truly “know” the way. But there is one path I could walk in my sleep: the walk from my childhood home to the church my family attended every Sunday. I know every bump in the footpath, every tree, and every garden. I don’t need a map for that; I know it by heart.

When we face the vast mystery of God, we often feel like Thomas. We wonder: How could I possibly understand a Creator who is surrounded by so much mystery? We might worry that we don’t know enough about the Bible, that we don’t understand the liturgy in the Prayer Book, or that we haven’t stepped foot in a church in years. We feel like we are standing before the “unknown” without a map.

But Jesus’ response is the most reassuring answer we could receive:
“I am the way and the truth and the life... If you really know me, you will know my Father as well.”

In Christian Education, students have been diving into the character of God—exploring who God really is behind the vast mystery of the universe. It can feel like a big, abstract concept, but we’ve been discovering that God isn’t a distant puzzle to be solved. Instead, we see God’s character most clearly through the actions of Jesus. Whether he was healing the hurting, welcoming the outsider, or comforting his friends, Jesus acts as a window into the heart of a loving God, showing us that at the core of everything is a love that is active, personal, and deeply kind. If we think of God as this love in action, God is not as unknown to us as we might think.

Whenever you have willed the good of another, whenever you have experienced generous affection or genuine care, you have felt the “bumps in the footpath” of God’s character. You don’t need to be a theologian to know the way; you just need to recognise the love that has been leading you all along.

SOUTHWELL NEWS

OUR SCHOOL COMMUNITY IS INVITED TO A PARENT CYBER SAFETY EVENING WITH ROB COPE

Do you ever feel like you're one step behind your child's digital world?
You aren't alone.

Independent Schools Waikato invite you to join them for an evening with Rob Cope, producer of Our Kids Online, for a humorous yet vital talk on parenting in the age of AI and social media. This talk moves past the "scare tactics" to give you real-world tools.

Rob will discuss:

The Impact: How social media and gaming affect developing brains and mental health.

The Risks: From the pressure to send "nudes" to spotting online predators.

The Blueprint: How to set healthy boundaries and challenge our own device usage to model better behavior for our kids.

Leave with a Plan: You will walk away with technical "how-tos" for filters and phone security, as well as the communication skills needed to keep your kids safe and your family connected.

KEY EVENT DETAILS

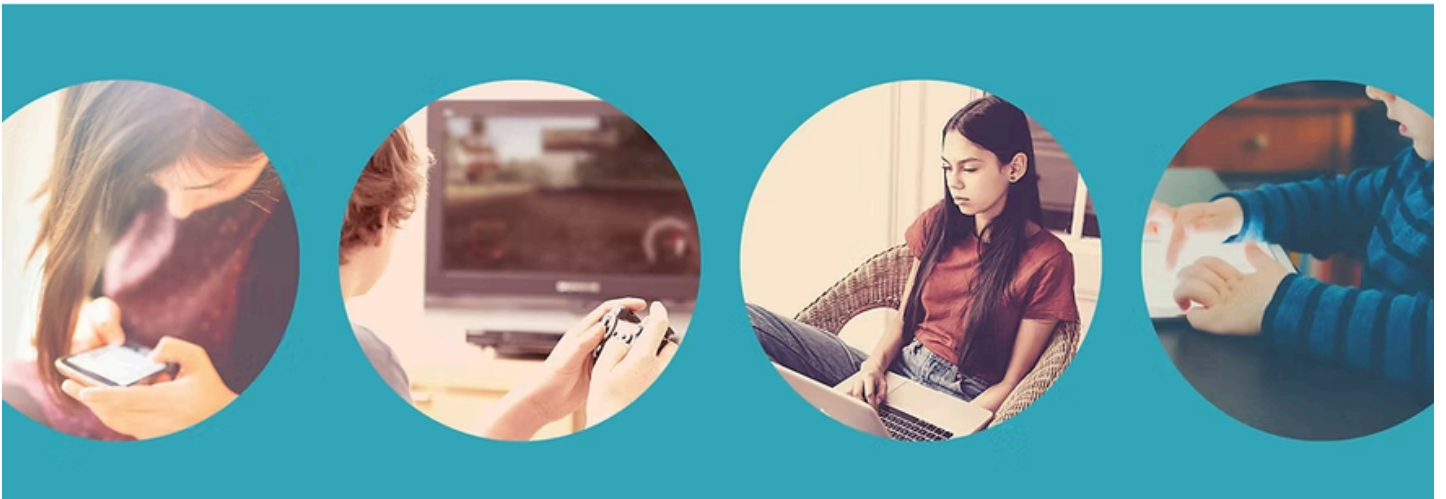
DATE: MONDAY, 15 JUNE

TIME: 6:30PM – 8:30PM

LOCATION: **ST. PETER'S SCHOOL AUDITORIUM,
CAMBRIDGE**

RSVP: [HERE](#)

Please note this talk is for adults only & is not suitable for children or teens to attend.



PINK SHIRT DAY 2026

Today our school was a sea of pink as we joined the nationwide movement for Pink Shirt Day Aotearoa - Kōrero Mai, Kōrero Atu – Speak Up, Stand Together. It is a day to celebrate diversity and promote kindness and inclusivity.

The "pink shirt" is a visible symbol of care, empathy, and understanding - the foundation of how we treat one another in the classroom, on the playground, and online, all year round. We encourage our students to carry the spirit of this day into every day, and every interaction.



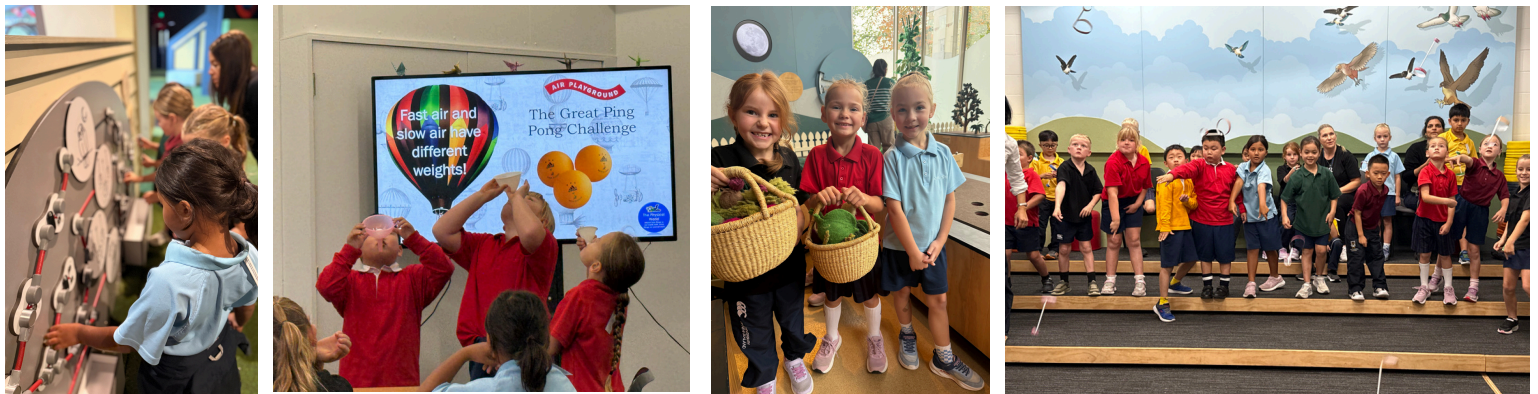
SOUTHWELL NEWS

FROM PHYSICS TO FINE ART: JUNIOR SCHOOL VISITS TO TE WHARE TAONGA O WAIKATO

This term, our students are venturing beyond the classroom to engage with the world in two very different ways. While our year levels are exploring separate inquiries, they are all heading to the same destination: Te Whare Taonga o Waikato (Waikato Museum). By visiting the same museum with different "learning lenses," our students are discovering that a single space can hold the answers to how the world works and how we express ourselves within it.

Year 2: The Power of the Push and Pull

Our Year 2 scientists are currently deep-diving into their inquiry, **"How the World Works."** Their mission at the museum was to master the physics of motion in the hands-on Excite gallery.



Year 3 & 4: The Language of Creativity

Meanwhile, our Year 3 and 4 students are exploring the inquiry, **"How We Express Ourselves."** For these students, the museum galleries become a space for reflection and interpretation as they ask the big question: "What is art?" Guided by museum experts, they observed local, national, and international works to understand the role art plays in our society.



A Shared Journey

While the Year 2s are testing the laws of gravity and friction, and the Year 3 and 4s are interpreting the meaning behind a brushstroke, both groups are learning the same vital lesson: curiosity is the key to discovery.

We look forward to seeing how these experiences spark new ideas back in the classroom. A huge thank you to the museum staff and our parent volunteers for making these hands-on learning experiences possible.

SOUTHWELL NEWS - YEAR 5 PRODUCTION

ROLE MODELS OF NEW ZEALAND



HOLY BAPTISM: 21ST JUNE, 2026



Baptism is about entry into the community of Christian believers, and about being marked by God in a special way. It assumes a commitment to grow into the faith on the part of those being baptised and their supporters. Baptism is about new beginnings and new life as a follower of Jesus, and it marks the start of a journey of faith that is life-long. If this is something your family has considered, and you would like to register your child to be baptised on 21st of June, please click [here](#) and fill in the details (by Friday, 30th of May) to receive further information.

from the **LIBRARY**

Thank you to all the families who supported their child for Book Character Day. It is always such a fun day and the costumes were a sight to behold!

How can you support your child with their reading for pleasure?

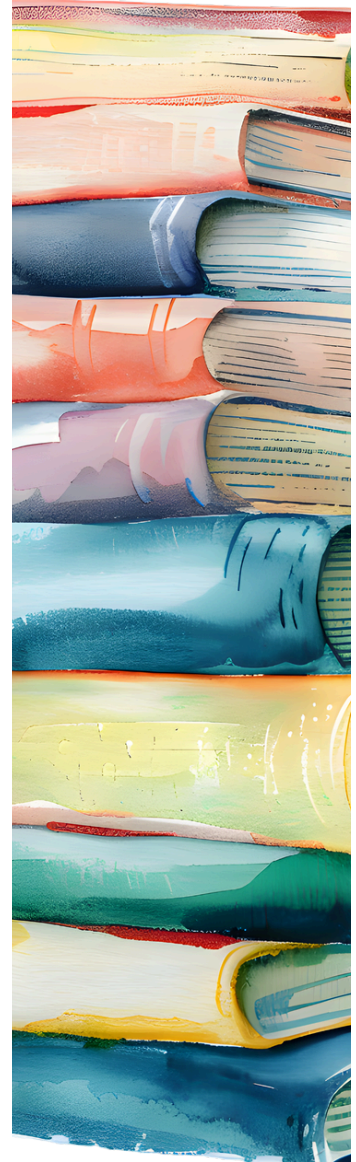
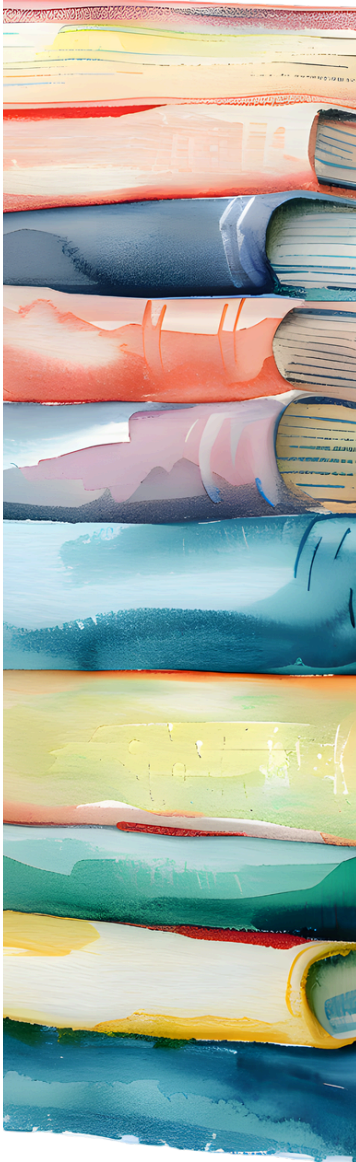
Show an interest in what they are reading. Keep up the lines of communication and chat about the book your child is reading, they should all be reading a book during **Just Read** time... ask them about that... , let me know if they need more support.

Keep it light and relaxed - avoid the comprehension questions.

Model reading for pleasure yourself.

Set aside time (before bed is great) for your child to relax with a book.

Read to your child, if they are open to it! Borrow audio books for car journeys. Our [Wheelers](#) platform is great for this.



SOUTHWELL NEWS

SHARE YOUR SPARK: JOIN OUR NEW HUMAN LIBRARY



Do you have a hobby you love, a job you're proud of, or a skill you've mastered? Our PYP students are naturally curious, and sometimes the best way for them to learn isn't from a book—it's from you.

We are excited to launch the "**Human Library**". This is a friendly directory designed to link our students' big questions with the amazing real-world experience found right here in our Southwell family.

NO "EXPERT" BADGE REQUIRED!

Don't let the word "expert" intimidate you. If you know your way around a garden, a spreadsheet, a toolbox, or a knitting needle, you have exactly what our students need. We're looking for parents and grandparents who are happy to chat about what they know.

WE'D LOVE TO HEAR FROM YOU IF YOU ENJOY:

Your Career: From farming and healthcare to engineering or business.

Creative Skills: Coding, local history, cooking, or photography.

Passions & Hobbies: Lego building, sports officiating, gardening, or even coin collecting!

HOW IT WORKS

You Set the Boundaries: You decide which topics you're comfortable discussing and how much time you can spare. Zero Stress, this isn't a teaching job.

Safety First: All connections are managed securely through school monitored accounts to keep things simple and safe for everyone.

Teacher-Led Coordination: Students never "cold call." Availability and willingness is confirmed before any student contact occurs.

Supervised Interaction: Students only communicate with experts under the direct supervision of a teacher.



READY TO INSPIRE A YOUNG MIND?
We'd love to add your name to our wall! Please let us know what "spark" you'd be willing to share by registering [HERE](#).
Let's turn our school library into a bridge to the real world.

SOUTHWELL NEWS

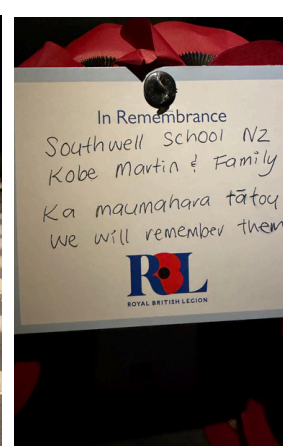


A JOURNEY OF REMEMBRANCE: KOBE'S PILGRIMAGE TO THE SOMME



Year 8 student Kobe Martin and his family recently returned from a "journey of a lifetime," a moving trek across Europe that balanced the beauty of the continent with a deeply personal mission of remembrance.

The family travelled from the lights of Paris through Brussels and into the historic fields of Flanders. Their ultimate destination, however, was a quiet corner of the Somme in France: the British Cemetery at Guyencourt-Saulcourt, where Kobe and his brother Kruz they laid wreaths of poppies at the memorial.



FROM THE UNIFORM SHOP

Opening hours - 8am - 4pm

Email - To ensure your requests are handled promptly, please use our dedicated email address for all uniform permissions: uniform@southwell.school.nz. Using this address ensures that both of our shop staff receive your message simultaneously.

Girls Winter Uniform

Girls' Winter Uniform Guidelines

As we settle into the cooler months, please keep the following hosiery requirements in mind:

Black Socks: May only be worn with culottes.

Black Tights: Must be worn if your child chooses to wear a skirt.

Number 1's: Black tights are mandatory for all Number 1 uniforms, regardless of whether a skirt or culotte is worn.

Scarves

Southwell scarves are back for 2026! Available now in the uniform shop - \$45
Please remember to send your child with a note or send us an email if your child wishes to purchase one.

Annie



Thank you to our families and their gorgeous pups who auditioned for the part of Sandy in our upcoming Opera, Annie.

We are very excited to introduce Charlie Haringa. Charlie is joining the Annie cast as Sandy. Mr McCabe's dog Aston will be Charlie's understudy.