



From the Headmaster

International Baculauriette - Deep Learning in Action!

At the mid-way point of Term 2, classrooms are buzzing with student-led discovery. Now in our second year of the IB PYP, it is exciting to see our students developing critical thinking, asking big questions, and showing growth as contributing citizens.

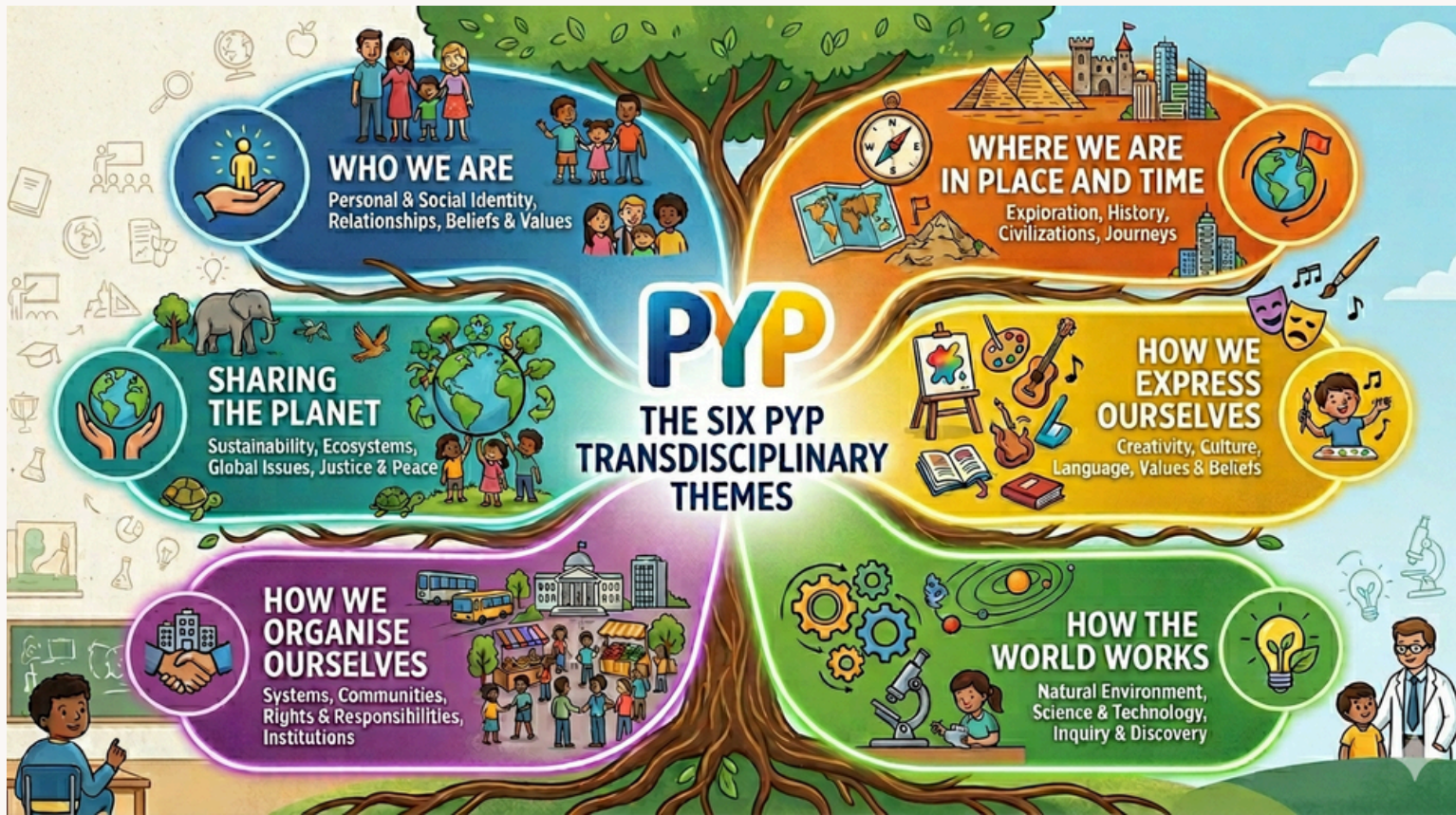
Unique to Southwell, is our ability to blend homeroom learning with our specialist teacher programme - our specialist teachers collaborate directly with homeroom teachers, linking their expertise to our core units. Multiple educators leading your child's learning together, deepening their understanding from every angle.

By grouping learning under shared themes, our students are making rich connections across the school:

- Sharing the Planet in Years 0&1 - with a focus on environmental stewardship and how we care for the natural world and sustainability of our own Waikato River!
- How the World Works in Year 2 - as we investigate forces, motion, and simple machines - how tools like levers, wedges, and pulleys make daily life easier.
- How We Express Ourselves in Years 3&4 - exploring a variety of artistic disciplines, students are diving into Passion Projects using visual arts, music, or performance to express their unique ideas.
- Where We Are in Space and Time in Years 5&8 - Year 5 is exploring animal adaptations and human impact on habitats. Meanwhile, Year 8 is tackling migration, the historic causes of human movement and the global responsibilities surrounding refugees.
- How We Organise Ourselves in Years 6&7 - with Year 6 looking closely at societal systems and how rules shape fairness in both games and communities. Year 7 is unpacking global commerce, examining the ethical impact of consumer choices.

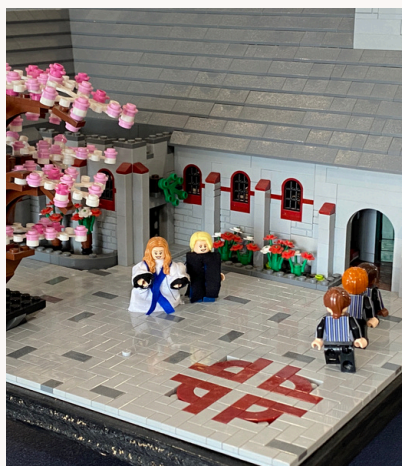
We are so proud of the curiosity, enthusiasm, and collaborative spirit our students and teachers are bringing to Southwell every single day. Thank you for partnering with us on this exciting educational journey!

Keryn Bindon, Headmaster



It's Official- an update at the Lego All Hallows Chapel

A wonderful milestone for our community. The beloved All Hallows Lego Chapel in the Management Centre has a new addition. Whenever our school community changes, its creator, Mr. Bryan, carefully updates the figures. Today, we captured the moment our new Chaplain, Rev'd Blythe Cody, placed her Lego figurine onto the board. Welcome to the team, Rev'd Cody!



SOUTHWELL NEWS- AWARDS, BADGES, CERTIFICATES & ANNOUNCEMENTS



ENVIRO MONITORS

Emily Cooper, Deagon
Everton, Beau Gower,
Felix Tang, Emily Lugton



AFTER SCHOOL MONITORS

Tiffany Tan, Alex
Gilberd, Theo Green



BOARDER OF THE WEEK

Mia Terry - for being
supportive, kind &
respectful



WET DAY MONITORS

Zoe Rong, Hugo Scott, Lachlan Martin, Ellvin Chheang, Kaylee Xie, Arya Bange, Sarah Ma, James Clune, Beau Rickman, Esme Goatcher, Xavier Thorburn, Lucas Liu, Nicholas Williams, Sylvie Grant



FOOD TECH MONITORS

Poppy Millar, Albert
O'Connor, Jackson Greene,
Daniel James, Faeza
Ayman, Stefan Jovanovic,
Mila Germann, Ingrid
Richardson, Indie Hughson,
Jayden Hu, Spencer White

SOUTHWELL NEWS- AWARDS, BADGES, CERTIFICATES & ANNOUNCEMENTS



Y3 & 4 GYMNASTICS CHAMPIONS

VELZIAN CUP

- 1 Elga McKimmie
- 2 Milla Xu
- 3 Grace Lee

MURTAGH CUP

- 1 Gabriel Qiu
- 2 Elijah Potter
- 3= Arlo Riggins
- 3= William Lord
Cowell



Y5 & 6 GYMNASTICS CHAMPIONS

HANSEN CUP

- 1 Nina Johns
- 2 Ella Schuster
- 3 Mai Tateishi

O'NEILL CUP

- 1 Jonty Oehley
- 2 Daniel Bell
- 3= Victor Stewart
- 3= Seb Swanepoel



Y7 & 8 GYMNASTICS CHAMPIONS

STRETTON CUP

- 1 Isabella Matheson
- 2 Charlotte Ariaens
- 3 Shiya Gong

O'NEILL CUP

- 1 Ewen Maisonneuve
- 2 Dylan Daws
- 3 Spencer Lee



MUSIC MONITORS

Edison Yan, Seino Tateishi,
Theo Trenwith, Sophie Gong,
Amanda Liu



POTTERY MONITORS

Tate Bradding, Beauden
Wright, Anja Nooyen,
Pippa Smith

SOUTHWELL NEWS - AWARDS, BADGES, CERTIFICATES & ANNOUNCEMENTS



JUNIOR HEADMASTER

Georgia Hill- always acts with integrity. She is always listening and doing what she is asked to do. She is non judgemental and always tells the truth. She has a very good moral compass.



ROBERTS CUP

OUTSTANDING OVERALL EFFORT IN GYMNASTICS
Kyra Vithani



MILK & COOKIE AND FLAG MONITORS

Joe Joe Davis,
Fergus Woodyard,
Ollie Jackson,
William Glen



SCIENCE BADGES

Jerry Ji- Ornithology, **Achilles Xiao** - Home Physics, **Harrison Pestello** - Conservation, **Beau Rickman** - Biosecurity, **Daniel James** - Chemical & Process Engineering, **Lucas Chueng** - Astronomy



SCIENCE BADGES

Amelia Li - Zoology, **Bella Bai** -Energy, **Georgia Donald** - Marine Biology & Antarctic Science, **Sophie Gong** - Cosmetic Science & Antarctic Science, **Amanda Liu** - Cosmetic Science, Astronomy & Antarctic Science, **Chloe Cui** - Marine Biology, **Mikayla Wang** - Marine Biology, **Parleen Kaur** - Water Science & Genetics, **Robyn Jansen van Rensburg** - Human Biology

SOUTHWELL NEWS - ASSEMBLY - WEEK 5 & 6

THE BELOW IMAGES WERE DISPLAYED ON THE LARGE SCREEN AT ASSEMBLY

HOW DO YOU SHOW THAT YOU ARE PRINCIPLED?



WHO IS PRINCIPLED?



SOUTHWELL NEWS - ASSEMBLY - WEEK 5 & 6

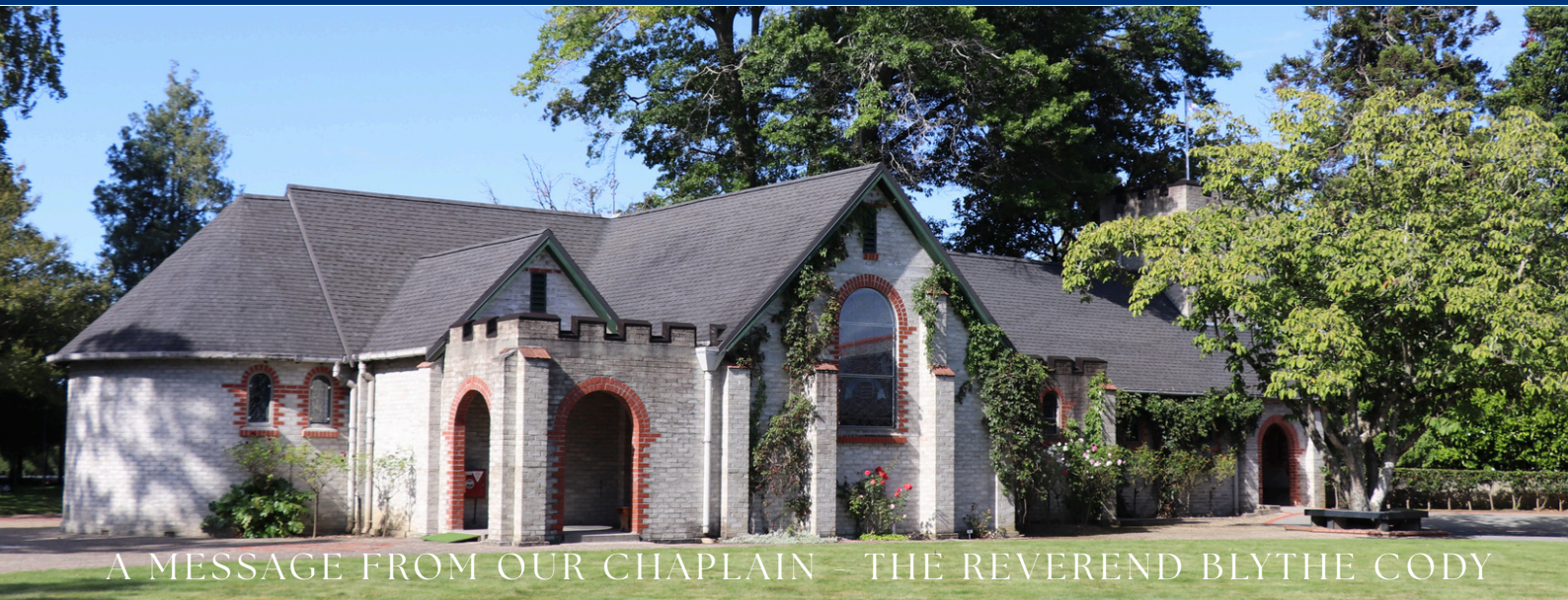
THE BELOW IMAGES WERE DISPLAYED ON THE LARGE SCREEN AT ASSEMBLY
TELL US ABOUT BEING OPEN-MINDED



WHO IS OPEN MINDED?



All Hallows Echo



A MESSAGE FROM OUR CHAPLAIN - THE REVEREND BLYTHE CODY

In Christian Education, we are exploring how the metaphor of the Good Shepherd reveals God's character and shapes how we lead. There is one story in particular that has made me think about my role as a mum—the story when Jesus goes looking for the lost sheep and searches and searches until He finds it.

My children are mostly grown now, but there was a time when I think my unofficial title could have been "Finder of All Lost Things." When they were small, they would come to me—sometimes multiple times a day—in a panic because a school shoe or a favourite toy had vanished. Even now that they are older, they still come to me when they have lost something and have run out of ideas of where to look. Somehow, almost every time, I can help them retrace their steps and pull the missing item out from the one spot they overlooked.

That instant shift from anxiety to peace when they realise a parent has it handled? That is a tiny glimpse into the heart of the Good Shepherd.

God's love is not transactional, frustrated, or annoyed with us. It is beautiful, safe, and unconditional. When a sheep gets lost, the Shepherd doesn't cross His arms, wait for an apology, or punish the sheep for wandering off. Instead, he begins a relentless, gentle search.

We have been discussing what this kind of leadership looks like in our classrooms, on the sports fields, and at home:

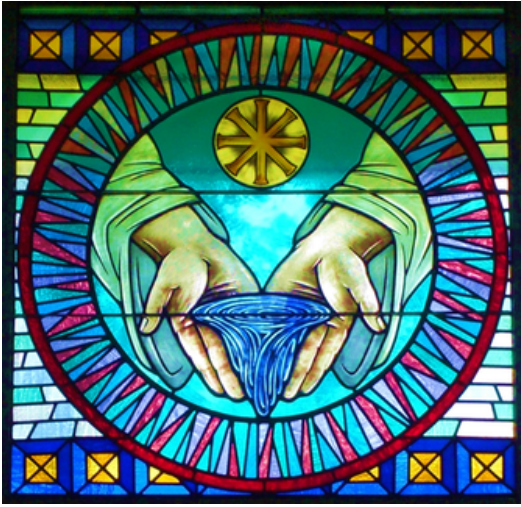
We provide a safe space: When someone is overwhelmed, we don't judge or pressure them. We offer a calm, reassuring presence.

We notice who is missing: We make sure that everyone is included.

We practice kindness: We look for opportunities to encourage and show care.

The next time you are patient with someone who made a mistake, reassure a stressed friend, or welcome someone who feels out of place, you are showing them a glimpse of the beautiful, unconditional love of the Good Shepherd.

HOLY BAPTISM: 21ST JUNE, 2026



Baptism is about entry into the community of Christian believers, and about being marked by God in a special way. It assumes a commitment to grow into the faith on the part of those being baptised and their supporters. Baptism is about new beginnings and new life as a follower of Jesus, and it marks the start of a journey of faith that is life-long. If this is something your family has considered, and you would like to register your child to be baptised on 21st of June, please click [here](#) and fill in the details (by Friday, 30th of May) to receive further information.

from the **LIBRARY**

Just Read

If you get a chance, check in with your child about what they are reading for Just Read at the moment. Are they enjoying it? What might they be looking to read next.

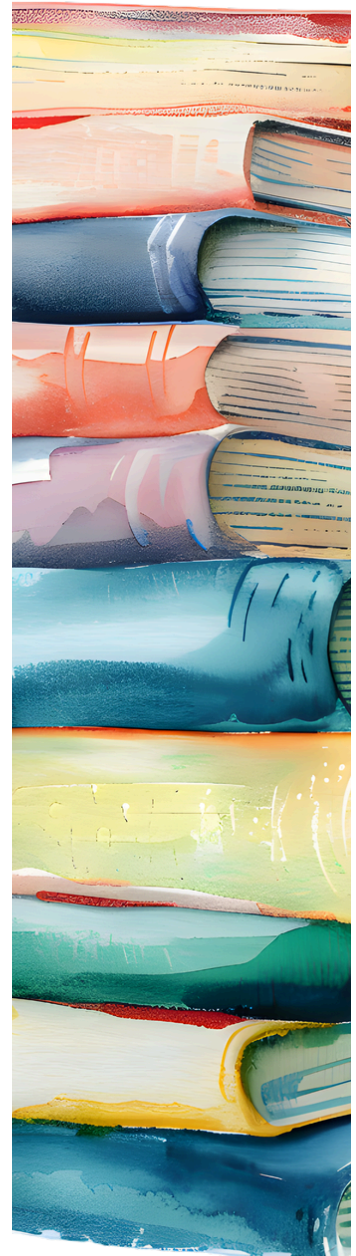
If your child is less than enthusiastic about reading, these conversations are gold as it models an interest in reading and it means they get a chance to connect with you AND their book.

If your child is resistant, do get in touch and we can see what we can do to help! Remember - keep it light and positive. Reading is meant to be pleasurable!

Kids Lit Quiz

Congratulations to our two fabulous KLQ teams who competed in the Waikato Regional Competition two weeks ago. Both teams represented Southwell beautifully.

The team of Ellie, Stirling, Shiya and Sofiya came 18th and the team of Georgia, Hannah, Evie and Romy came 2nd. With a field of 48 teams, these results were outstanding.



SOUTHWELL NEWS

OUR SCHOOL COMMUNITY IS INVITED TO A PARENT CYBER SAFETY EVENING WITH ROB COPE

Do you ever feel like you're one step behind your child's digital world?
You aren't alone.

Independent Schools Waikato invite you to join them for an evening with Rob Cope, producer of Our Kids Online, for a humorous yet vital talk on parenting in the age of AI and social media. This talk moves past the "scare tactics" to give you real-world tools.

Rob will discuss:

The Impact: How social media and gaming affect developing brains and mental health.

The Risks: From the pressure to send "nudes" to spotting online predators.

The Blueprint: How to set healthy boundaries and challenge our own device usage to model better behavior for our kids.

Leave with a Plan: You will walk away with technical "how-tos" for filters and phone security, as well as the communication skills needed to keep your kids safe and your family connected.

KEY EVENT DETAILS

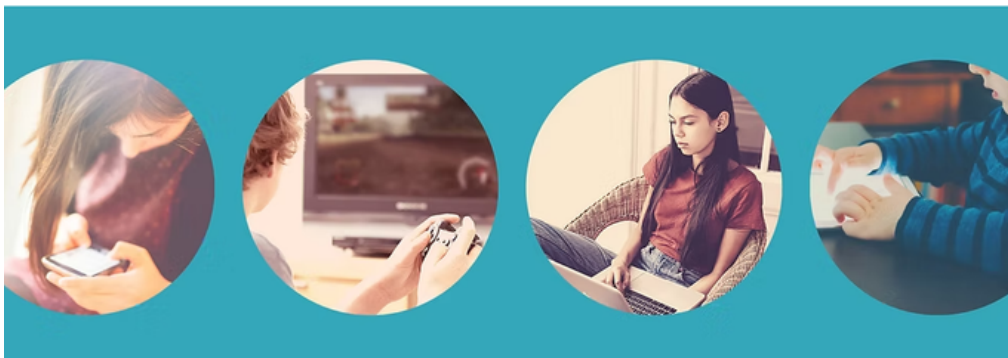
DATE: MONDAY, 15 JUNE

TIME: 6:30PM – 8:30PM

LOCATION: ST. PETER'S SCHOOL AUDITORIUM,
CAMBRIDGE

RSVP: [HERE](#)

Please note this talk is for adults only & is not suitable for children or teens to attend.



A reminder for all students working on **Science Fair** entries. All projects (wallcharts, photos, videos, drawings and science fair boards) are due on the first day of Term 3. This deadline is dictated by the cut off for entries to the regional Science Fair. If you know you will be away in Week 1 Term 3, you need to submit your work before the school holidays (the end of Term 2). If you have any questions, or would like to have your work critiqued, please see Ms Voss by Week 8 of this term.

SOUTHWELL SNAPSHOTS

SHARE YOUR SPARK: OUR NEW HUMAN LIBRARY



Do you have a hobby you love, a job you're proud of, or a skill you've mastered? Our PYP students are naturally curious, and sometimes the best way for them to learn isn't from a book—it's from you.

We are so excited to launch the **"Human Library"**. This is a friendly directory designed to link our students' big questions with the amazing real-world experience found right here in our Southwell family.

NO "EXPERT" BADGE REQUIRED!

Don't let the word "expert" intimidate you. If you know your way around a garden, a spreadsheet, a toolbox, or a knitting needle, you have exactly what our students need. We're looking for parents and grandparents who are happy to chat about what they know.

WE'D LOVE TO HEAR FROM YOU IF YOU ENJOY:

Your Career: From farming and healthcare to engineering or business.

Creative Skills: Coding, local history, cooking, or photography.

Passions & Hobbies: Lego building, sports officiating, gardening, or even coin collecting!

HOW IT WORKS

You Set the Boundaries: You decide which topics you're comfortable discussing and how much time you can spare. Zero Stress, this isn't a teaching job.

Safety First: All connections are managed securely through school monitored accounts to keep things simple and safe for everyone.

Teacher-Led Coordination: Students never "cold call." Availability and willingness is confirmed before any student contact occurs.

Supervised Interaction: Students only communicate with experts under the direct supervision of a teacher.



**READY TO INSPIRE A YOUNG MIND?
We'd love to add your name to our wall!
Please let us know what "spark" you'd
be willing to share by registering [HERE](#).
Let's turn our school library into a
bridge to the real world!**

SOUTHWELL SNAPSHOTS

